

Product Name	Cat. No.	Pack Size
Anti- γ Tubulin Antibody	# BB-AB0120	100μg (100μl)

Product type: Primary Antibody

Clonality: Polyclonal

Source: Rabbit

Immunogen: Recombinant mouse gamma tubulin protein expressed in *E. coli*.

Description: Globular tubulin subunits comprise the microtubule building block, with α/β -tubulin heterodimers forming the tubulin subunit common to all eukaryotic cells. As a critical part of the microtubule-organizing center (MTOC), the third member of the tubulin superfamily, γ -tubulin, is required for microtubule nucleation as well as centrosome duplication and spindle assembly. Gamma tubulin is a ~49 KDa mammalian protein. Anti- γ tubulin antibody is primarily used to test purity of cytoplasmic cell fractionation and loading control. This antibody is produced in rabbit by repeated injections of Immunogen.

Purification: Purified against gamma tubulin protein affinity chromatography.

Specificity: This antibody recognizes endogenous levels of total γ -tubulin protein.

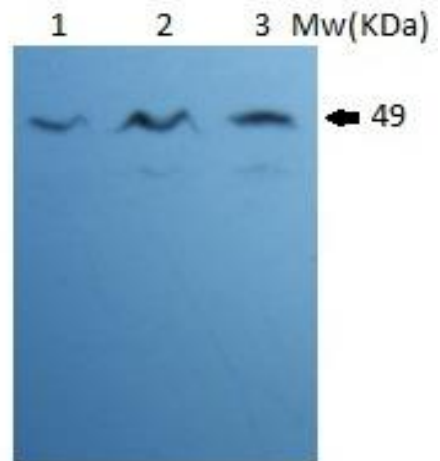
Recommended Dilutions:

Western Blotting 1:2,000-5,000

ELISA 1:1,000

Storage buffer: Tris Buffer pH 7.4, containing 50% Glycerol without azide.

Storage instructions: Store at -20°C (Recommended).



**Western blot analysis of mammalian cell extracts, HEK 289 (lane 1), U87MG (lane 2), and MiaPaCa (lane 3), using Anti- γ tubulin polyclonal antibody.*

*N. B. (Membrane blocking): One hr at RT in 5% (w/v) non-fat milk; (Primary Ab): Overnight at 4°C in 1% non-fat milk; (Secondary Ab): One hr at RT in 1% non-fat milk. All incubations and washings are in 1X TBS, 0.1% Tween-20.

Exp. Date: 18 months upon receiving at proper storage condition as mentioned in datasheet.