

Product Name	Cat. No.	Pack Size
--------------	----------	-----------

Anti- FLAG Antibody	# BB-AB0015	100µg (100µl)
----------------------------	--------------------	----------------------

Product type: Primary Antibody

Clonality: Polyclonal

Source: Rabbit

Immunogen: Synthetic DYKDDDDK peptide conjugated to KLH.

Description: Proteins of interest are generally tagged with FLAG peptide for easy checking of their expression in recombinant strains. Anti-FLAG antibody is the tool for detection of FLAG-tag proteins by different immunological techniques. This antibody is produced in rabbit by repeated injections of Immunogen.

Purification: Purified against peptide affinity chromatography.

Specificity: FLAG-tag polyclonal antibody detects FLAG-tag recombinant proteins expressed in eukaryotic and prokaryotic cells. This antibody recognizes both C-terminal and N-terminal tags.

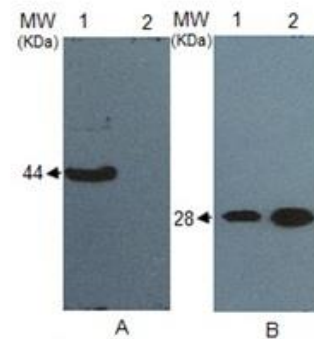
Recommended Dilutions:

Western Blotting 1:1000

ELISA 1:1000

Storage buffer: Tris Buffer pH 7.4, containing 1% BSA & 50% Glycerol without azide.

Storage instructions: Store at -20°C (Recommended).



(A) *Western blot analysis of mammalian cell extracts expressing FLAG-tag protein, 44 KDa (lane 1) and control extract (lane 2) using FLAG-tag polyclonal antibody.

(B) *Western blot analysis of FLAG-tag pure protein, 28 KDa (lane 1) and bacterial cell extract (lane 2) expressing

*N. B. (Membrane blocking): One hr at RT in 5% (w/v) non-fat milk; (Primary Ab): Overnight at 4°C in 1% non-fat milk; (Secondary Ab): One hr at RT in 1% non-fat milk. All incubations and washings are in 1X TBS, 0.1% Tween-20.

Exp. Date: 18 months upon receiving at proper storage condition as mentioned in datasheet.