

Product Name	Cat. No.	Pack Size
<b>Anti-Erk2/MAPK1 Antibody</b>	<b># BB-AB0135</b>	<b>100µg (100µl)</b>

**Product type:** Primary Antibody

**Clonality:** Polyclonal

**Source:** Rabbit

**Immunogen:** Full length mouse Erk2 protein (42 KDa) expressed in E. coli.

**Description:** Mitogen-activated protein kinases (MAPKs) are a widely conserved family of serine/threonine protein kinases involved in many cellular programs such as cell proliferation, differentiation, motility, and death. The p44/42MAPK (ERK1/2) signalling pathway can be activated in response to a diverse range of extracellular stimuli including mitogens, growth factors, and cytokines. Anti- Erk2 antibody can be used for detection of Erk2 protein by immunological techniques. This antibody is produced in rabbit by repeated injections of Immunogen.

**Purification:** Purified against Erk2 protein affinity chromatography.

**Specificity:** This antibody detects Erk2protein in eukaryotic cell (human, mice) extract and recombinant Erk2proteins expressed in prokaryotic cells.

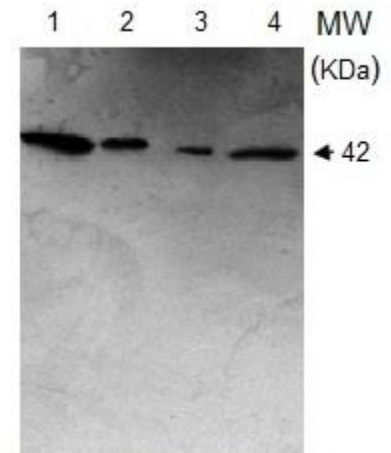
**Recommended Dilutions:**

Western Blotting 1:5,000

ELISA 1:1,000

**Storage buffer:** Tris Buffer pH 7.4, containing 50% Glycerol without azide.

**Storage instructions:** Store at -20°C (Recommended).



*\*Western blot analysis of CL2 (lane 1), Vero76 (lane 2), A549 (lane 3) and RAW (lane 4) cell extracts using Anti- Erk2 polyclonal antibody.*

\*N. B. (Membrane blocking): One hr at RT in 5% (w/v) non-fat milk; (Primary Ab): Overnight at 4°C in 1% non-fat milk; (Secondary Ab): One hr at RT in 1% non-fat milk. All incubations and washings are in 1X TBS, 0.1% Tween-20.

*Exp. Date: 18 months upon receiving at proper storage condition as mentioned in datasheet.*