

Product Name
Cat. No.
Pack Size
Anti- p50 Antibody
BB-AB0080
80 µg (80 µl)
Product type: Primary Antibody

Clonality: Polyclonal

Source: Rabbit

Immunogen: Mouse p50 (residues 1-430) protein expressed in *E. coli*.

Description: The transcription factors NF-κB/Rel family play a pivotal role in inflammatory and immune responses. There are five family members in mammals: RelA, c-Rel, RelB, NF-κB1 (p105/p50), and NF-κB2 (p100/p52). Both p105 and p100 are proteolytically processed by the proteasome to produce p50 and p52, respectively. Rel proteins bind p50 and p52 to form dimeric complexes that bind DNA and regulate transcription. In unstimulated cells, NF-κB is sequestered in the cytoplasm by IκB inhibitory proteins. NF-κB-activating agents can induce the phosphorylation of IκB proteins, targeting them for rapid degradation through the ubiquitin-proteasome pathway and releasing NF-κB to enter the nucleus where it regulates gene expression. NIK and IKKα (IKK1) regulate the phosphorylation and processing of NF-κB2 (p100) to produce p52, which is then translocated to the nucleus. Following IKK-mediated phosphorylation of p105 NF-κB at multiple sites (Ser921, 923, 927, and 932) on its carboxy-terminus, SCF/β-TrCP mediated processing produces the 50 kDa active form p50.

Anti-P50 antibody can be used for detection of P50 protein by immunological techniques. This antibody is produced in rabbit by repeated injections of Immunogen.

Purification: Purified against P50 (residues 1-430) protein affinity chromatography.

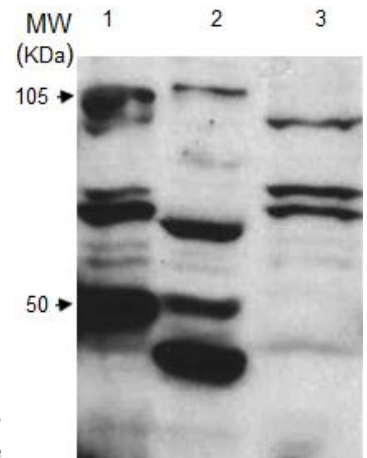
Specificity: This antibody detects P50 protein in mice, human (weakly) cell extract and recombinant p50 proteins expressed in prokaryotic cells.

Recommended Dilutions:

Western Blotting	1:30,000
ELISA	1:10,000
ChIP/IP	1:1000

Storage buffer: Tris Buffer pH 7.4, containing 50% Glycerol without azide.

Storage instructions: Store at -20°C (Recommended).



*Western blot analysis of 3T3 (lane 1), 293T (lane 2) and p50 knock out (lane3) cell extract using anti- p50 polyclonal antibody. Bands at 105 kDa and 50 kDa are due to p105 (unprocessed) and p50 (processed) proteins respectively.

*N. B. (Membrane blocking): One hr at RT in 5% (w/v) non-fat milk; (Primary Ab): Overnight at 4°C in 1% non-fat milk; (Secondary Ab): One hr at RT in 1% non-fat milk. All incubations and washings are in 1X TBS, 0.1% Tween-20.

Exp. Date: 18 months upon receiving at proper storage condition as mentioned in datasheet.