

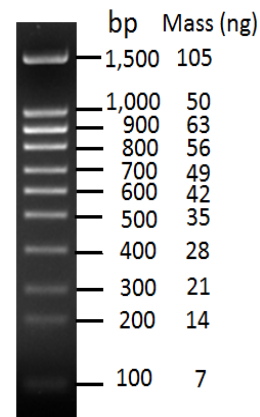
Product Name	Cat. No.	Pack Size
DNA ladder LMW	# BB-D50	50 µg (500 µl)
	# BB-D51	2 X 50 µg (1ml)

Concentration: 0.1µg/µL

Storage: -20°C

This ready to load low molecular weight DNA ladder contains twelve bands (1500bp, 1000bp, 900bp, 800bp, 700bp, 600bp, 500bp, 400bp, 300bp, 200bp, and 100bp). This DNA ladder premixed with loading dye (Bromophenol blue and Xylene Cyanol) can be used for direct loading on gel (~5 µl/ lane).

Note: 5µl (i.e. 500 ng) loading is recommended.



LMW ladder by EtBr staining on a 1% TAE agarose gel. 500 ng/lane.