

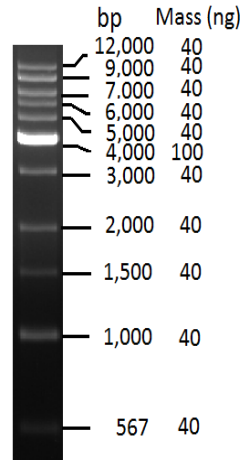
Product Name	Cat. No.	Pack Size
<b>DNA ladder HMW 1Kbp</b>	# BB-D30	50 µg (500 µl)
	# BB-D31	2 X 50 µg (1 ml)

**Concentration: 0.1µg/µl**

**Storage: -20°C**

Ready-to-Load DNA mix from 0.5 Kbp (Kilo base pairs) to 12 Kbp could be used for approximate determination of double strand DNA size and mass. It contains eleven purified DNA fragments: 0.5, 1, 1.5, 2, 3, **4**, 5, 6, 7, 9 & 12 Kbp. Highest intensity **4 Kbp** band can be used as the reference. This DNA ladder premixed with loading dye (Bromophenol and Xylene Cyanol) can be used for direct loading on gel (~**5µl/lane**).

**Note:** 5 µl (i.e. 500 ng) loading is recommended.



**HMW Ladder** by EtBr staining on 0.7% TAE agarose gel. 500 ng/lane