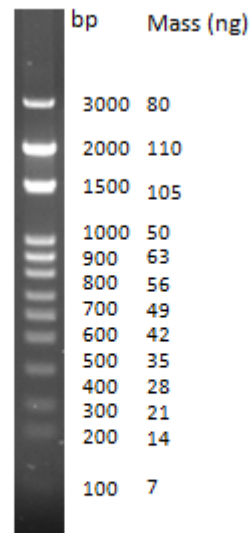


Product Name	Cat. No.	Pack Size
DNA Ladder LMW ^{Plus}	# BB-D40	50 µg (500 µl)
	# BB-D41	2 X 50 µg (1 ml)

Concentration: 0.1µg/µL
Storage: -20°C

This ready to load low molecular weight DNA ladder contains thirteen bands (3000bp, 2000bp, 1500bp, 1000bp, 900bp, 800bp, 700bp, 600bp, 500bp, 400bp, 300bp, 200bp, and 100bp). This DNA ladder premixed with loading dye (Bromophenol blue and Xylene Cyanol) can be used for direct loading on gel (~5 µl/ lane).

Note: 5µl (i.e. 500 ng) loading is recommended.



LMW ladder visualized by EtBr staining on a 1% TAE agarose gel. Mass value are for 500 ng/lane.