

Product Name
Cat. No.
Pack Size
Anti-His Antibody
BB-AB0010
80 µl (80 µg)
Product type: Primary Antibody

Clonality: Polyclonal

Source: Rabbit

Immunogen: Synthetic 6x His peptide conjugated to KLH.

Description: Proteins of interest are generally tagged with His peptide for both an easy detection and simple purification by Ni²⁺-affinity chromatography. Anti-His antibody is the tool for detection of His-tag proteins by different immunological techniques.

This antibody is produced in rabbit by repeated injections of Immunogen.

Purification: Purified against peptide affinity chromatography.

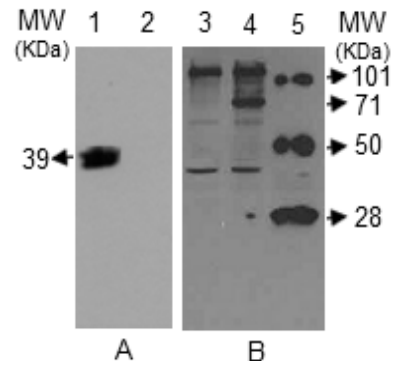
Specificity: His-tag polyclonal antibody detects His-tag recombinant proteins expressed in eukaryotic and prokaryotic cells. This antibody recognizes both C-terminal and N-terminal tags.

Recommended Dilutions:

Western Blotting	1:2000
ELISA	1:10,000

Storage buffer: Tris Buffer pH 7.4, containing 1% BSA & 50% Glycerol without azide.

Storage instructions: Store at -20°C (Recommended).



(A) *Western blot analysis of mammalian cell extracts expressing His-tag protein, 39 KDa (lane 1) and control extract (lane 2) using His-tag polyclonal antibody.

(B) *Western blot analysis of control yeast cell extracts (lane 3), yeast cell extracts expressing His-tag 71 KDa protein (lane 4) and His-tag bacterial proteins, 101 KDa, 50 KDa, 28 KDa (lane 5) using His-tag polyclonal antibody.

*N. B. (Membrane blocking): One hr at RT in 5% (w/v) non-fat milk; (Primary Ab): Overnight at 4°C in 1% non-fat milk; (Secondary Ab): One hr at RT in 1% non-fat milk. All incubations and washings are in 1X TBS, 0.1% Tween-20.

Exp. Date: 18 months upon receiving at proper storage condition as mentioned in datasheet.