

Product Name	Cat. No.	Pack Size
<b>Anti-GAPDH Antibody</b>	<b># BB-AB0060</b>	<b>80µg (80µl)</b>

**Product type:** Primary Antibody

**Clonality:** Polyclonal

**Source:** Rabbit

**Immunogen:** Recombinant human Glyceraldehyde 3-phosphate dehydrogenase (GAPDH) protein (residues 13-335) expressed in *E. coli*.

**Description:** GAPDH is an enzyme of ~37kDa that catalyzes the conversion of glyceraldehyde 3-phosphate in the sixth step of glycolysis and thus serves to break down glucose for energy and carbon molecules. In addition to this long established metabolic function, GAPDH has recently been implicated in several non-metabolic processes, including transcription activation, initiation of apoptosis, and ER to Golgi vesicle shuttling. Anti-GAPDH antibody is primarily used to test purity of cytoplasmic cell fractionation and loading control. This antibody is produced in rabbit by repeated injections of Immunogen.

**Purification:** Purified against GAPDH protein (residues 13-335) affinity chromatography.

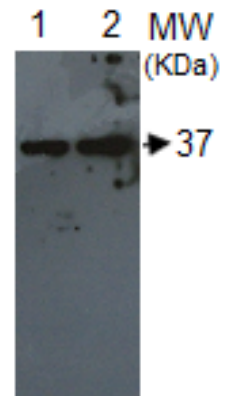
**Specificity:** This antibody detects GAPDH protein in eukaryotic cell extract and recombinant proteins expressed in prokaryotic cells.

**Recommended Dilutions:**

Western Blotting	1:2000
ELISA	1:10,000

**Storage buffer:** Tris Buffer pH 7.4, containing 50% Glycerol without azide.

**Storage instructions:** Store at -20°C (Recommended).



*\*Western blot analysis of mammalian cell extracts for GAPDH protein (~37kDa), Hela (lane 1) and Hek (lane 2) using Anti-GAPDH polyclonal antibody.*

\*N. B. (Membrane blocking): One hr at RT in 5% (w/v) non-fat milk; (Primary Ab): Overnight at 4°C in 1% non-fat milk; (Secondary Ab): One hr at RT in 1% non-fat milk. All incubations and washings are in 1X TBS, 0.1% Tween-20.

*Exp. Date: 18 months upon receiving at proper storage condition as mentioned in datasheet.*